

# Major Scale / Ionian Mode

Do Re Mi Fa So La Ti Do

5

Ti La So Fa Mi Re Do

Detailed description: This block contains two staves of musical notation. The first staff shows the ascending major scale (Ionian mode) with solfège syllables: Do, Re, Mi, Fa, So, La, Ti, Do. The second staff, starting at measure 5, shows the descending major scale: Ti, La, So, Fa, Mi, Re, Do. Both scales are written in a treble clef with a key signature of one sharp (F#).

## Stepwise with accents

9

13

21

Detailed description: This section contains three staves of musical notation. The first staff (measures 9-12) is in 3/4 time and shows stepwise motion with accents on the 2nd, 4th, 6th, and 8th notes. The second staff (measures 13-20) is in 3/4 time and shows stepwise motion with accents on the 2nd, 4th, 6th, 8th, 10th, 12th, and 14th notes. The third staff (measures 21-24) is in 5/4 time and shows stepwise motion with accents on the 2nd, 4th, 6th, 8th, 10th, 12th, 14th, and 16th notes. Each staff ends with a repeat sign and a final bar line.

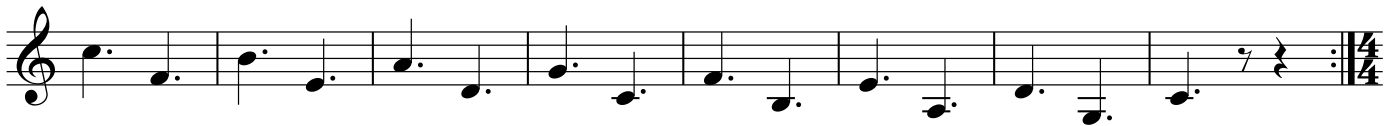
## Broken 3rds

Detailed description: This section contains two staves of musical notation. The first staff (measures 25-28) is in 5/4 time and shows broken thirds (dyads) in the sequence: C4-E4, D4-F4, E4-G4, F4-A4, G4-B4, A4-C5, B4-D5, A4-G4, F4-E4, D4-C4. The second staff (measures 29-32) is in 3/4 time and shows broken thirds in the sequence: C4-E4, D4-F4, E4-G4, F4-A4, G4-B4, A4-C5, B4-D5, A4-G4, F4-E4, D4-C4. Each staff ends with a repeat sign and a final bar line.

## Broken 4ths



## Broken 5ths



## Harmonize at every interval

